

Reg. No:

--	--	--	--	--	--	--	--	--	--

SIDDHARTH INSTITUTE OF ENGINEERING & TECHNOLOGY:: PUTTUR
(AUTONOMOUS)**B.Tech II Year II Semester Supplementary Examinations July-2022****BUILDING PLANNING & DRAWING**

(Civil Engineering)

Time: 3 hours

Max. Marks: 60

PART -A**30 Marks****UNIT-I**

- 1 Explain the various types of residential buildings with neat sketches. **L1 10M**
- OR**
- 2 a Explain the applicability of the bye-laws in the present day construction? **L2 5M**
b Write short notes on detached house. **L1 5M**

UNIT-II

- 3 a Discuss about the usual requirements of a hotel building. **L1 5M**
b Briefly explain the components of a bus station. **L1 5M**
- OR**
- 4 a Explain the different principles used while planning an industrial buildings in an industrial area. **L2 5M**
b Draw a rough plan of an educational building in a town. **L3 5M**

UNIT-III

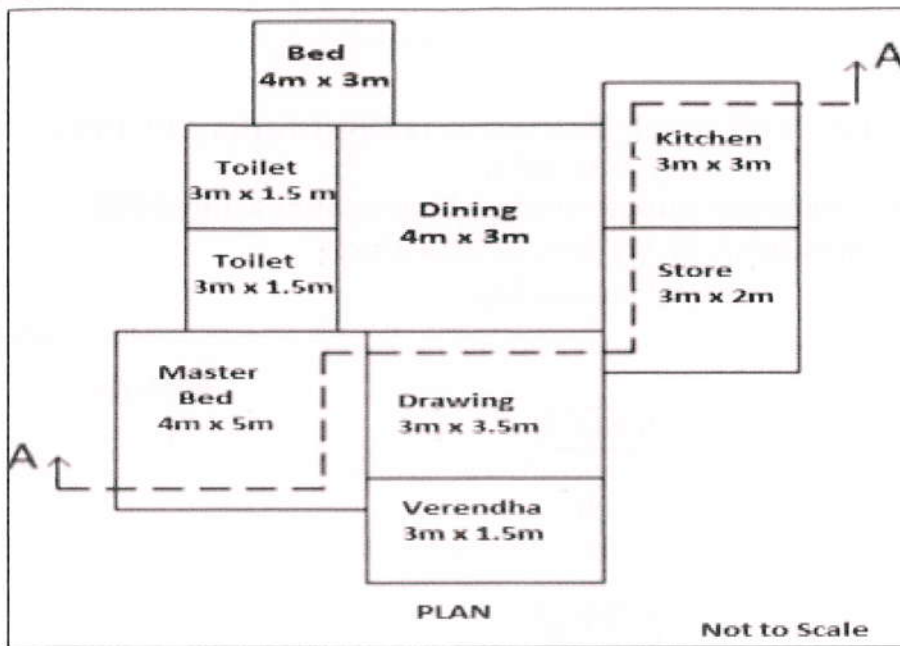
- 5 Mention the different aspects of building safety. Explain each of them in detail. **L1 10M**
- OR**
- 6 Explain the following terms: **L1 10M**
a) Air conditioning comfort b) Lighting comfort c) Noise and Acoustic comfort

PART -B**30 Marks****UNIT-IV**

- 7 Draw the conventional signs for the following: **L2 10M**
i) Glass ii) Brick iii) Copper alloys iv) Aluminium alloys
- OR**
- 8 Draw to a suitable scale the front elevation of a King post truss indicating all details for a clear opening of 5000 mm. **L2 10M**

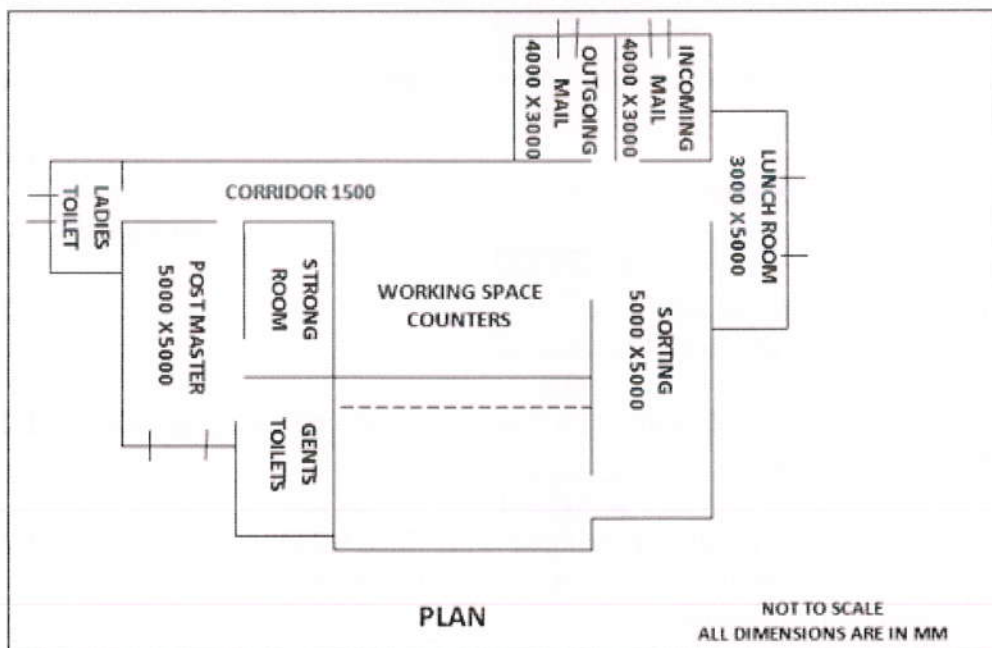
UNIT-V

- 9 The line diagram for a plan of a residential building is provided below: **L3 20M**
Draw a neat diagram of the plan and section AA of the same. Assume all data required as per the standard dimensions.



OR

- 10 . Draw plan, section and elevation for the following line drawing: (Provide standard dimensions for doors, windows and ventilation) L3 20M



*** END ***